

Progressive Traditional Tunes

Various

1. Adson's Saraband

Musical score for "Adson's Saraband" in 6/4 time. The piece consists of four staves of music. The first staff begins with a piano (*p*) dynamic. The second staff ends with a forte (*f*) dynamic. The piece concludes with a double bar line at the end of the fourth staff.

2. About Ship

Fast

Musical score for "About Ship" in 4/4 time, marked "Fast". The piece consists of four staves of music. The first staff begins with a forte (*f*) dynamic. The second staff contains a piano (*p*) dynamic marking. The third staff contains a forte (*f*) dynamic marking. The fourth staff contains a piano (*p*) dynamic marking. The piece concludes with a double bar line at the end of the fourth staff.

2

3. Shetland Lullaby



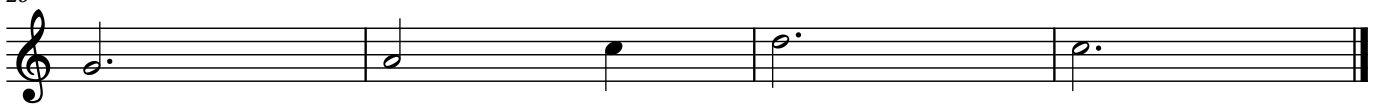
9



19



29



4. Wayfaring Stranger



7



14



21



28



5. Scarborough Fair



11



6. Shady Grove

Musical notation for 'Shady Grove' in common time (C). The piece consists of 12 measures. The first measure is marked *mp*. The melody is written on a single treble clef staff. Measure 6 is marked *p*. The piece concludes with a double bar line at the end of measure 12.

7. Jolly Sailor

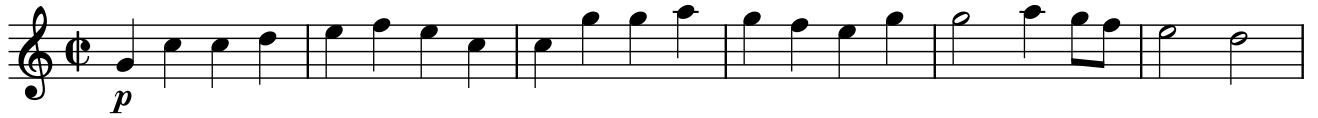
Musical notation for 'Jolly Sailor' in 4/4 time. The piece consists of 12 measures. The first measure is marked *f*. The melody is written on a single treble clef staff. Measure 6 is marked *ff*. The piece concludes with a double bar line at the end of measure 12.

8. Will o' th' Wisp

Musical notation for 'Will o' th' Wisp' in common time (C). The piece consists of 12 measures. The first measure is marked *f*. The melody is written on a single treble clef staff. Measure 6 is marked *2nd time mp*. The piece concludes with a double bar line at the end of measure 12, featuring two endings: '1.' and '2.'.

4

9. The Bank



7



13



19



10. The Sailor's Dance



6



12



11. Welsh Fair



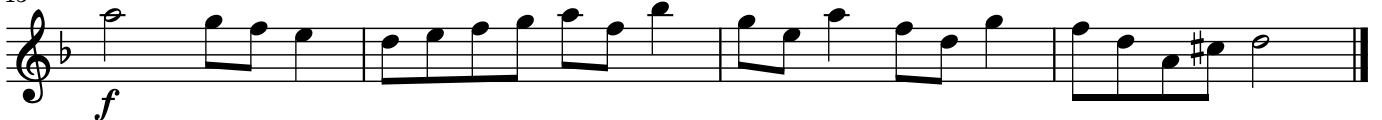
5



9



13



12. Leapfrog

Allegro

Musical score for 'Leapfrog' in G major, 4/4 time, Allegro. The score consists of four staves of music. The first staff starts with a treble clef, a key signature of one sharp (F#), and a 4/4 time signature. It begins with a dynamic marking of *f*. The melody features a mix of quarter, eighth, and dotted notes. The second staff starts at measure 7. The third staff starts at measure 13 and features a dynamic marking of *ff*. The fourth staff starts at measure 18 and ends with a double bar line and repeat dots.

13. The Dawning of the Day G major

Adagio (slowly)

Musical score for 'The Dawning of the Day' in G major, 4/4 time, Adagio. The score consists of three staves of music. The first staff starts with a treble clef, a key signature of one sharp (F#), and a 4/4 time signature. It begins with a dynamic marking of *mf*. The melody is characterized by wide intervals and a slow, spacious feel. The second staff starts at measure 6 and features a dynamic marking of *f*. The third staff starts at measure 12 and features a dynamic marking of *mp*. The piece concludes with a double bar line and repeat dots.

14. La Siesta

Musical score for 'La Siesta' in G major, 3/4 time. The score consists of three staves of music. The first staff starts with a treble clef, a key signature of one sharp (F#), and a 3/4 time signature. The melody is slow and features a mix of quarter and eighth notes. The second staff starts at measure 6 and includes a repeat sign. The third staff starts at measure 12 and ends with a double bar line and repeat dots.

15. The Longest Day

Adagio

Musical score for 'The Longest Day' in 3/4 time, Adagio tempo. The score consists of three staves of music. The first staff begins with a treble clef, a key signature of one sharp (F#), and a dynamic marking of *mf*. A long slur covers the first six measures. The second staff continues with a slur over the first six measures. The third staff continues with a slur over the first six measures and ends with a double bar line.

16. Minuet

Musical score for 'Minuet' in 3/4 time. The score consists of three staves of music. The first staff begins with a treble clef, a key signature of two sharps (F# and C#), and a dynamic marking of *mp*. The second staff begins with a treble clef, a key signature of two sharps, and a dynamic marking of *mf*. The third staff begins with a treble clef, a key signature of two sharps, and ends with a double bar line.

17. The Dawning of the Day D major

Musical score for 'The Dawning of the Day D major' in 4/4 time. The score consists of three staves of music. The first staff begins with a treble clef, a key signature of two sharps (F# and C#), and a dynamic marking of *p*. The second staff begins with a treble clef, a key signature of two sharps, and a dynamic marking of *mf*. The third staff begins with a treble clef, a key signature of two sharps, and a dynamic marking of *f*. The score ends with a double bar line.

18. The Sussex Polka

Musical score for 'The Sussex Polka' in G minor, 2/4 time. The piece consists of four staves of music. The first staff begins with a double bar line and a repeat sign, followed by a dynamic marking of *f*. The second staff starts at measure 5 and includes a dynamic marking of *ff*. The third staff starts at measure 10 and includes a dynamic marking of *f*. The fourth staff starts at measure 15 and ends with a double bar line and repeat sign.

19. Nay, Tell Me Not

Musical score for 'Nay, Tell Me Not' in 6/4 time, marked *Moderato*. The piece consists of four staves of music. The first staff begins with a double bar line and a repeat sign, followed by a dynamic marking of *mf*. The second staff starts at measure 4 and includes first and second endings. The third staff starts at measure 8. The fourth staff starts at measure 11 and ends with a double bar line and repeat sign.

19a. Nay, Tell Me Not

Musical score for '19a. Nay, Tell Me Not' in D major, 6/8 time, marked *Andantino*. The piece consists of three staves of music. The first staff begins with a double bar line and a repeat sign, followed by a dynamic marking of *mf*. It includes first and second endings. The second staff starts at measure 6. The third staff starts at measure 12 and ends with a double bar line and repeat sign.

8

20. Merry Go Round C major

Musical notation for 'Merry Go Round' in C major, 6/8 time. The first line starts with a treble clef and a key signature of one sharp (F#). The tempo is marked *mf*. The melody consists of eighth and quarter notes. A repeat sign is present at the end of the line, followed by a *f* dynamic marking.

6

Continuation of the musical notation for 'Merry Go Round', showing the second line of the piece.

21. Chasing the Hare

Musical notation for 'Chasing the Hare' in C major, 6/8 time. The first line starts with a treble clef and a key signature of one sharp (F#). The tempo is marked *mf*. The melody features dotted rhythms and eighth notes.

7

Continuation of the musical notation for 'Chasing the Hare', showing the second line. A *f* dynamic marking is present.

14

Continuation of the musical notation for 'Chasing the Hare', showing the third line. The piece concludes with a repeat sign.

22. My Home

Musical notation for 'My Home' in B-flat major, 3/4 time. The first line starts with a treble clef and a key signature of two flats (Bb, Eb). The tempo is marked *mp*. The melody is characterized by long, sweeping phrases connected by a slur.

7

Continuation of the musical notation for 'My Home', showing the second line.

14

Continuation of the musical notation for 'My Home', showing the third line.

21

Continuation of the musical notation for 'My Home', showing the fourth line.

28

Continuation of the musical notation for 'My Home', showing the fifth and final line. The piece concludes with a repeat sign.

23. Slow March A major

Musical score for '23. Slow March A major' in A major, 3/4 time. The score consists of four staves. The first staff begins with a treble clef, a key signature of two sharps (F# and C#), and a common time signature (C). It starts with a repeat sign and a section symbol (§). The dynamic marking *f* is placed below the first measure. The second staff contains measures 5-8, with a first ending bracket over measures 7-8 and a second ending bracket over measures 9-10. The word 'Fine' is written above the end of the second ending. The third staff contains measures 10-15, with a dynamic marking of *mp* below the first measure. The fourth staff contains measures 16-19, with a dynamic marking of *cresc.* below the first measure and the instruction 'D.S. al Fine' above the end of the piece.

24. The Old Folks

Musical score for '24. The Old Folks' in A major, 6/8 time. The score consists of three staves. The first staff begins with a treble clef, a key signature of two sharps (F# and C#), and a 6/8 time signature. It starts with a dynamic marking of *mf* below the first measure. The second staff contains measures 6-11, with a dynamic marking of *f* below the first measure of the second ending. The third staff contains measures 12-15, ending with a repeat sign.

25. In the Days Gone By

Musical score for '25. In the Days Gone By' in B-flat major, 3/4 time. The score consists of four staves. The first staff begins with a treble clef, a key signature of two flats (Bb and Eb), and a common time signature (C). It starts with a dynamic marking of *p* below the first measure and ends with a dynamic marking of *mf* below the last measure. The second staff contains measures 5-9, with a dynamic marking of *p* below the last measure. The third staff contains measures 10-14, with a dynamic marking of *mp* below the first measure. The fourth staff contains measures 15-18, ending with a repeat sign.

26. Antwerp Waltz

Musical score for "26. Antwerp Waltz" in 3/4 time, key of D major. The score consists of five staves of music. The first staff begins with a dynamic marking of *f*. The second staff has a first ending (1.) and a second ending (2.) with a dynamic marking of *p*. The third staff also has first and second endings with a dynamic marking of *mf*. The fourth staff has first and second endings with a dynamic marking of *f* and a *cresc.* marking. The fifth staff has first and second endings with a dynamic marking of *mf* and a *cresc.* marking.

27. Jokes and Jears

Musical score for "27. Jokes and Jears" in 6/8 time, key of D major. The score consists of three staves of music. The first staff begins with a dynamic marking of *mf*. The second staff has a dynamic marking of *mp*. The third staff ends with a repeat sign.

28. The Pirate's Waltz

Musical score for "28. The Pirate's Waltz" in 3/4 time, key of D major. The score consists of three staves of music. The first staff begins with a dynamic marking of *mf* and ends with a dynamic marking of *p*. The second staff has a dynamic marking of *f*. The third staff ends with a repeat sign.

29. Geese in the Bog

Musical score for 'Geese in the Bog' in 6/8 time, key of B-flat major. The piece consists of three staves of music. The first staff starts with a *mf* dynamic. The second staff begins at measure 6 and includes a *mp* dynamic. The third staff begins at measure 12 and features first and second endings, with a *mf* dynamic.

30. The Busy Body

Musical score for 'The Busy Body' in 6/8 time, key of B-flat major. The piece consists of three staves of music. The first staff starts with a *f* dynamic. The second staff begins at measure 7 and includes a *mf* dynamic. The third staff begins at measure 13 and ends with a repeat sign.

31. The Butterfly

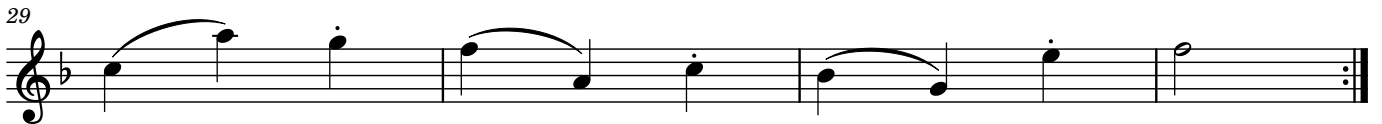
Musical score for 'The Butterfly' in 3/2 time, key of B-flat major. The piece consists of four staves of music. The first staff starts with a *mp* dynamic and includes a triplet. The second staff begins at measure 7 and includes a *p* dynamic. The third staff begins at measure 13 and includes a *cresc.* marking and a *mf* dynamic. The fourth staff begins at measure 19 and includes a triplet.

32. The Bonny Lass D major



33. Hungarian Waltz

$\text{♩} = 80$



34. When Johnny Comes Marching Home



35. The Minstrel Boy

Musical score for 'The Minstrel Boy' in G major, 4/4 time. The piece begins with a treble clef and a key signature of one sharp (F#). The first staff starts with a dynamic marking of *mf* and includes a first ending bracket. The second staff starts at measure 5 with a second ending bracket. The third staff starts at measure 10 and concludes the piece with a double bar line.

36. While Blooming Youth

Musical score for 'While Blooming Youth' in B-flat major, 4/4 time. The piece begins with a treble clef and a key signature of two flats (Bb, Eb). The first staff starts with a dynamic marking of *mp*. The second staff starts at measure 6 and includes a *2nd X p* marking. The third staff starts at measure 11 and includes *mf* and *p* markings. The fourth staff starts at measure 16 and includes a first ending bracket, a *mf* marking, and a second ending bracket.

37. The Blazing Comet

Musical score for 'The Blazing Comet' in C major, 6/8 time. The piece begins with a treble clef and a key signature of no sharps or flats. The first staff starts with a dynamic marking of *mp*. The second staff starts at measure 6 and includes a *mf-f* marking. The third staff starts at measure 12 and concludes the piece with a double bar line.

38. The Lilies of the Field

Fine

Musical notation for the first staff of 'The Lilies of the Field'. It is in treble clef, key of D major (two sharps), and 4/4 time. The melody starts with a piano (*p*) dynamic. The staff contains 8 measures of music, ending with a double bar line and repeat dots.

Musical notation for the second staff of 'The Lilies of the Field'. It continues the melody from the first staff, marked with a mezzo-forte (*mf*) dynamic. The staff contains 8 measures of music.

Musical notation for the third staff of 'The Lilies of the Field'. It continues the melody, marked with a mezzo-forte (*mf*) dynamic. The staff contains 8 measures of music, ending with a double bar line and the instruction 'D.C. al Fine'.

39. Along the Ocean Shore

Musical notation for the first staff of 'Along the Ocean Shore'. It is in treble clef, key of D major (two sharps), and common time (C). The melody is marked with a mezzo-forte (*mf*) dynamic. The staff contains 8 measures of music, with a long slur over the first four measures.

Musical notation for the second staff of 'Along the Ocean Shore'. It continues the melody, marked with a mezzo-forte (*mf*) dynamic. The staff contains 8 measures of music, with a long slur over the first four measures.

Musical notation for the third staff of 'Along the Ocean Shore'. It continues the melody, marked with a mezzo-forte (*mf*) dynamic. The staff contains 8 measures of music, with a long slur over the first four measures.

Musical notation for the fourth staff of 'Along the Ocean Shore'. It continues the melody, marked with a mezzo-forte (*mf*) dynamic. The staff contains 8 measures of music, ending with a double bar line.

40. West Street Assembly

Musical notation for the first staff of 'West Street Assembly'. It is in treble clef, key of B-flat major (two flats), and 6/8 time. The melody is marked with a fortissimo (*ff*) dynamic. The staff contains 8 measures of music.

Musical notation for the second staff of 'West Street Assembly'. It continues the melody, marked with a fortissimo (*f*) dynamic. The staff contains 8 measures of music, with a double bar line and repeat dots in the middle.

Musical notation for the third staff of 'West Street Assembly'. It continues the melody, marked with a fortissimo (*f*) dynamic. The staff contains 8 measures of music, ending with a double bar line and repeat dots.

41. Black Beard

Musical notation for 'Black Beard' in treble clef, key of D major (two sharps), and common time (C). The piece consists of three staves of music. The first staff starts with a dynamic marking of *mf*. The second staff starts with a dynamic marking of *f* and ends with *ff*. The third staff continues the melody. The piece concludes with a double bar line and repeat dots.

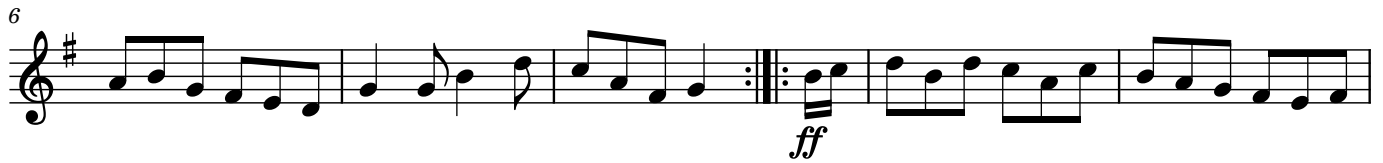
42. The Bold Soldier Boy

Musical notation for 'The Bold Soldier Boy' in treble clef, key of B-flat major (two flats), and 2/4 time. The piece consists of three staves of music. The first staff starts with a dynamic marking of *mp*. The second staff starts with a dynamic marking of *f* and includes a repeat sign with first and second endings. The third staff continues the melody and ends with a double bar line and repeat dots.

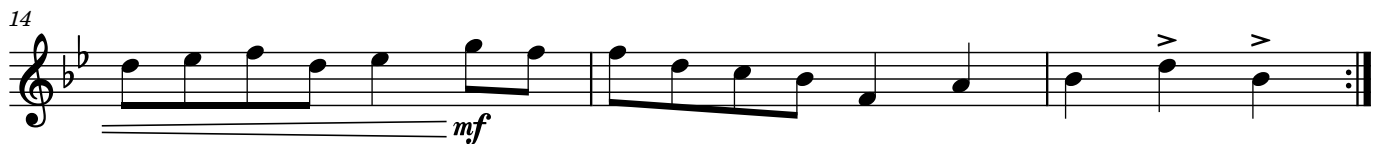
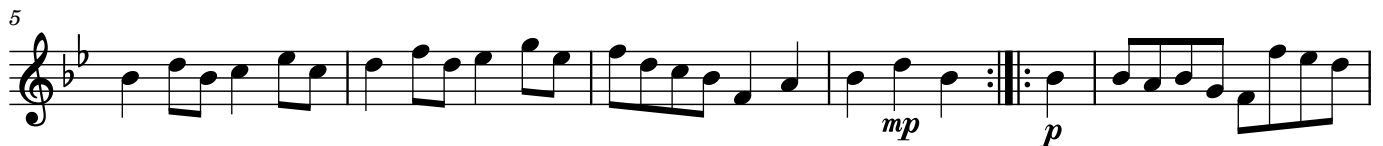
43. Bow Bells

Musical notation for 'Bow Bells' in treble clef, key of B-flat major (two flats), and 6/8 time. The piece consists of three staves of music. The first staff starts with a dynamic marking of *mf* and ends with *f*. The second staff starts with a dynamic marking of *mf* and includes a repeat sign with first and second endings. The third staff continues the melody and ends with a double bar line and repeat dots.

44. The Drum Corps



45. The Admiral



46. The Regatta



47. Everybody Two-Step

Musical score for 'Everybody Two-Step' in 2/4 time, key of D major. The score consists of four staves of music. The first staff starts with a treble clef, a key signature of two sharps (D major), and a common time signature. The first measure is marked with a forte *f* dynamic. The second staff begins at measure 5, with a mezzo-forte *mf* dynamic. The third staff begins at measure 9, with a mezzo-piano *mp* dynamic, and includes accents (>) over several notes. The fourth staff begins at measure 14, with a forte *f* dynamic. The piece concludes with a double bar line and repeat dots.

48. The Drum Major

Musical score for 'The Drum Major' in 6/8 time, key of Bb major. The score consists of three staves of music. The first staff starts with a treble clef, a key signature of two flats (Bb major), and a 6/8 time signature. The first measure is marked with a forte *f* dynamic. The second staff begins at measure 6, with a mezzo-forte *mf* dynamic. The third staff begins at measure 11, with a mezzo-forte *mf* dynamic. The piece concludes with a double bar line and repeat dots.

49. Greensleeves

Musical score for 'Greensleeves' in 3/4 time, key of D major. The score consists of four staves of music. The first staff starts with a treble clef, a key signature of two sharps (D major), and a 3/4 time signature. The second staff begins at measure 8. The third staff begins at measure 17. The fourth staff begins at measure 26. The piece concludes with a double bar line and repeat dots.

50. The Air Balloon

Musical score for "The Air Balloon" in B-flat major, 2/4 time. The piece consists of five staves of music. The first staff begins with a treble clef, a key signature of two flats (B-flat major), and a dynamic marking of *mp*. The second staff includes a first ending bracket and a second ending bracket, with a *cresc.* marking and a dynamic marking of *f*. The third staff continues the melody with a *mp* marking and a *f* marking. The fourth and fifth staves complete the piece with a repeat sign at the end.

51. I'll Owe You One

Musical score for "I'll Owe You One" in D major, 2/4 time. The piece consists of three staves of music. The first staff begins with a treble clef, a key signature of two sharps (D major), and a dynamic marking of *mf*. The second staff continues the melody. The third staff includes a *f* marking and a *dim.* marking. The fourth staff concludes the piece with a *f* marking and a repeat sign.

52. Beethoven's Favourite Waltz

Musical score for "Beethoven's Favourite Waltz" in D major, 3/4 time. The piece consists of three staves of music. The first staff begins with a treble clef, a key signature of two sharps (D major), and a dynamic marking of *mf*. The second staff includes first and second ending brackets. The third staff concludes the piece with a *mp* marking and a repeat sign.

19

25

31

53. Blue Rhine Waltz

8

16

23

30

54. The Bonny Lass

6

11

55. Excuse Me

$\text{♩} = 90$

p

5
pp cresc. mf

9
(mf) p mf

13
(mf) f

17

Detailed description: This is the musical score for 'Excuse Me'. It is written in treble clef with a key signature of two flats (Bb, Eb) and a 6/4 time signature. The tempo is marked as quarter note = 90. The score consists of five staves of music. The first staff starts with a piano (*p*) dynamic. The second staff includes a piano-piano (*pp*) dynamic and a crescendo (*cresc.*) leading to a mezzo-forte (*mf*) dynamic. The third staff has dynamics of mezzo-forte (*mf*), piano (*p*), and mezzo-forte (*mf*). The fourth staff has mezzo-forte (*mf*) and forte (*f*) dynamics. The fifth staff ends with a repeat sign.

56. Country Gardens

mf

5
f p

9
mp

13
mf

Detailed description: This is the musical score for 'Country Gardens'. It is written in treble clef with a key signature of two flats (Bb, Eb) and a common time (C) signature. The score consists of four staves of music. The first staff starts with a mezzo-forte (*mf*) dynamic. The second staff has forte (*f*) and piano (*p*) dynamics. The third staff has mezzo-piano (*mp*) dynamics. The fourth staff has mezzo-forte (*mf*) dynamics. The score ends with a repeat sign.

57. A Slow March

f

5
1. 2.

Detailed description: This is the musical score for 'A Slow March'. It is written in treble clef with a key signature of two flats (Bb, Eb) and a common time (C) signature. The score consists of two staves of music. The first staff starts with a forte (*f*) dynamic. The second staff includes first and second endings, labeled '1.' and '2.' respectively. The score ends with a repeat sign.

10

15

58. The Young Recruit
 Slow rubato

7

14

22

29

36

59. The Eagle's Whistle

6

12

60. The Banquet

Musical score for "60. The Banquet" in 2/4 time, key of B-flat major. The score consists of three staves of music. The first staff starts with a dynamic marking of *f* and ends with *p*. The second staff begins at measure 6, marked *sfz*, and includes a *Fine* marking above a repeat sign. The third staff begins at measure 12, marked *cresc.*, and ends with a *D.C. al Fine* instruction.

61. La Solitaire

Musical score for "61. La Solitaire" in 6/8 time, key of D major. The score consists of four staves of music. The first staff starts with a dynamic marking of *mf*. The second staff begins at measure 7, marked *mp*, and includes a *Fine* marking above a repeat sign. The third staff begins at measure 13, marked *p*. The fourth staff begins at measure 19.

62. The Aerial Flight

Musical score for "62. The Aerial Flight" in common time, key of D major. The score consists of three staves of music. The first staff starts with a dynamic marking of *mf*. The second staff begins at measure 3, marked *mp*, and includes a repeat sign. The third staff begins at measure 6 and ends with a repeat sign.

63. Zelda

Musical score for 'Zelda' in G major, 6/8 time. The piece begins with a forte (*f*) dynamic and a melodic line. It features a first ending (1.) and a second ending (2.) leading to a *mf* section. The score includes a 'D.C. al Fine' instruction and a second ending (2.) in 3/8 time.

64. The Wexford Rebel

Musical score for 'The Wexford Rebel' in G major, common time (C). The tempo is marked 'Andante' and the dynamic is *mp*. The score includes a *dim.* marking and a section marked 'a tempo' with a *poco rit.* instruction and a triplet of eighth notes.

65. The Fair-Haired Weaver

Musical score for 'The Fair-Haired Weaver' in G major, common time (C). The piece starts with a piano (*p*) dynamic and includes a triplet of eighth notes. The dynamic changes to *mf* and then *mp* later in the piece.

66. Paddy McGuire

Musical score for "Paddy McGuire" in 6/8 time, key of B-flat major. The score consists of three staves of music. The first staff starts with a *mf* dynamic. The second staff begins at measure 6 and includes a repeat sign, with dynamics *p* and *mf*. The third staff begins at measure 11 and includes a repeat sign, with dynamics *p* and *mf*.

67. The Eagle's Whistle

Musical score for "The Eagle's Whistle" in common time, key of B-flat major. The score consists of seven staves of music. The first staff starts with a *mp* dynamic and includes a crescendo hairpin leading to a *p* dynamic. The second staff begins at measure 5 and includes a crescendo hairpin leading to a *cresc.* dynamic. The third staff begins at measure 10 and includes a *mf* dynamic. The fourth staff begins at measure 14 and includes dynamics *mp* and *p*. The fifth staff begins at measure 18 and includes a *cresc.* dynamic. The sixth staff begins at measure 22 and includes a decrescendo hairpin leading to a *mf* dynamic.

68. The Bonny Lass (9-12yrs)

Musical score for 'The Bonny Lass' in G major (one sharp) and 2/4 time. The piece consists of four staves of music. The first staff starts with a treble clef and a key signature of one sharp (F#), with a dynamic marking of *mp*. The second staff begins at measure 6 and has a dynamic marking of *mf*. The third staff begins at measure 13 and has a dynamic marking of *mp*. The fourth staff begins at measure 19 and ends with a double bar line.

69. Amusement

Musical score for 'Amusement' in B-flat major (two flats) and 6/8 time. The piece consists of three staves of music. The first staff starts with a treble clef and a key signature of two flats (Bb, Eb), with a dynamic marking of *mp*. The second staff begins at measure 6 and includes a 'Fine' marking above a repeat sign and a dynamic marking of *mf*. Below the staff, the instruction 'last time rit.' is written. The third staff begins at measure 12 and includes a 'D.C. al Fine' marking above the staff.

70. Come Dance and Sing

Musical score for 'Come Dance and Sing' in B-flat major (two flats) and 2/4 time. The piece consists of four staves of music. The first staff starts with a treble clef and a key signature of two flats (Bb, Eb), with a dynamic marking of *f*. The second staff begins at measure 4 and includes a triplet of eighth notes marked with a '3' and a 'cresc.' dynamic marking. The third staff begins at measure 9 and has a dynamic marking of *mf*. The fourth staff begins at measure 13 and includes a 'D.C. al Fine' marking above the staff.

71. The Arrival

Musical score for '71. The Arrival' in 6/8 time, key of B-flat major. The score consists of five staves of music. The first staff begins with a repeat sign and a dynamic marking of *mf*. The second staff is marked with a measure rest '6' and a dynamic marking of *mp*, and includes the instruction 'Fine'. The third staff continues the melody. The fourth staff is marked with a measure rest '17' and a dynamic marking of *p*. The fifth staff is marked with a measure rest '23' and includes the instruction 'D.S. al Fine'.

72. The Eagle's Whistle

Musical score for '72. The Eagle's Whistle' in 3/4 time, key of D major. The score consists of five staves of music. The first staff begins with a dynamic marking of *mp*. The second staff is marked with a measure rest '6' and a dynamic marking of *mf*. The third staff is marked with a measure rest '12' and a dynamic marking of *f*. The fourth staff is marked with a measure rest '18' and includes dynamic markings of *dim.* and *p*. The fifth staff is marked with a measure rest '24' and a dynamic marking of *cresc.*

30

Musical staff 30-34 in treble clef, key of D major. It features a melodic line with eighth and sixteenth notes. A dynamic marking of *f* is present at the end of the staff.

35

Musical staff 35-40 in treble clef, key of D major. It continues the melodic line with eighth and sixteenth notes. Dynamic markings include *f* and *mp*.

41

Musical staff 41-46 in treble clef, key of D major. It features a melodic line with eighth and sixteenth notes. A dynamic marking of *mp* is present. The staff includes first and second endings.

73. The Village Wedding

Musical staff 1-4 in treble clef, key of D major, 6/8 time signature. It features a melodic line with eighth notes. Dynamic markings include *f* and *mp*.

5

Musical staff 5-8 in treble clef, key of D major, 6/8 time signature. It features a melodic line with eighth notes. A dynamic marking of *f* is present.

9

Musical staff 9-12 in treble clef, key of D major, 6/8 time signature. It features a melodic line with eighth notes. A dynamic marking of *p* is present.

13

Musical staff 13-16 in treble clef, key of D major, 6/8 time signature. It features a melodic line with eighth notes. A dynamic marking of *cresc.* is present.

74. Tinker's Stick

Musical staff 1-4 in treble clef, key of D major, 4/4 time signature. It features a melodic line with eighth notes. A dynamic marking of *mf* is present.

5

Musical staff 5-8 in treble clef, key of D major, 4/4 time signature. It features a melodic line with eighth notes. The word *Fine* is written at the end of the staff.

9

Musical staff 9-12 in treble clef, key of D major, 4/4 time signature. It features a melodic line with eighth notes. A dynamic marking of *f* is present.

13

Musical staff 13-16 in treble clef, key of D major, 4/4 time signature. It features a melodic line with eighth notes. A dynamic marking of *dim.* is present.

75. The Mills are Grinding

Musical score for "The Mills are Grinding" in G major, 2/4 time. The piece consists of 13 measures. It begins with a forte (*f*) dynamic. The melody is characterized by eighth-note patterns. The score includes a first ending at measure 11 and a second ending at measure 12, both leading to a double bar line. The piece concludes with a "Fine" marking at the end of measure 13. A "D.C. al Fine" instruction is placed above the final measure.

76. The Eagle's Whistle

Musical score for "The Eagle's Whistle" in G major, 3/4 time. The tempo is marked as $\text{♩} = 110$. The piece consists of 16 measures. It begins with a mezzo-forte (*mf*) dynamic. The melody features a prominent whistle-like motif. The score includes a first ending at measure 10 and a second ending at measure 11, both leading to a double bar line. A *dim.* (diminuendo) marking is present in measure 8. The piece concludes with a double bar line at measure 16.

77. When de Moon Shines

Musical score for "When de Moon Shines" in D major, 2/4 time. The tempo is marked as **Allegro**. The piece consists of 12 measures. It begins with a mezzo-forte (*mf*) dynamic. The melody is characterized by eighth-note patterns. The score includes a first ending at measure 10 and a second ending at measure 11, both leading to a double bar line. The piece concludes with a double bar line at measure 12.

78. The Merry Go Round

mp

6

mf

14

mp

mf

21

79. Bridal Waltz

mp

8

mf

16

p

22

mp

28

dim.

80. The Ball

Musical score for 'The Ball' in 6/8 time, key of B-flat major. The score consists of three staves of music. The first staff begins with a dynamic marking of *f*. The second staff includes a repeat sign and a dynamic marking of *2nd time dim.*. The third staff ends with a dynamic marking of *cresc.*

81. Adam Bells March

♩ = 90

Musical score for 'Adam Bells March' in 2/4 time, key of D major. The score consists of three staves of music. The first staff is the beginning of the piece. The second staff contains a series of eighth-note patterns. The third staff features a melodic line with slurs.

82. The Hermit

Musical score for 'The Hermit' in 2/4 time, key of D major. The score consists of three staves of music. The first staff has dynamic markings of *mp*, *mf*, and *mp*. The second staff includes a dynamic marking of *mf*, a *Fine* marking, and a dynamic marking of *p*. The third staff includes a dynamic marking of *sub. p* and a *D.C. al Fine* marking.

83. The Barefoot Boy

Vivace

Musical score for "The Barefoot Boy" in G minor, 6/8 time. The piece is marked "Vivace". It begins with a piano (*p*) dynamic. The first line (measures 1-5) shows a rhythmic pattern of eighth and sixteenth notes. The second line (measures 6-10) includes a repeat sign and a mezzo-forte (*mf*) dynamic. The third line (measures 11-16) is the first ending, marked "1.". The fourth line (measures 17-22) is the second ending, marked "2.", which concludes the piece with a double bar line.

84. Morning Lark

Musical score for "Morning Lark" in D major, 6/8 time. It begins with a mezzo-forte (*mf*) dynamic. The first line (measures 1-5) features a melodic line with eighth and sixteenth notes. The second line (measures 6-10) includes a repeat sign and a mezzo-piano (*mp*) dynamic. The third line (measures 11-16) continues the melodic development. The fourth line (measures 17-22) concludes the piece with a double bar line.

85. Blow the Candle Out

Andante

Musical score for "Blow the Candle Out" in D major, 2/4 time. It is marked "Andante". The first line (measures 1-6) begins with a mezzo-forte (*mf*) dynamic and includes a crescendo (*cresc.*) marking. The second line (measures 7-13) includes a mezzo-forte (*mf*) dynamic and a decrescendo (*dim.*) marking. The third line (measures 14-18) concludes the piece with a double bar line.

28

1. 2.

f

37

rall.

89. Le Tambourin de Chartre

mp *tr* *mf* *p*

6

mf *mp* *tr* *mf*

13

p *mf* *tr* *Fine*

18

tr

23

tr *D.S. al Fine*

90. Bird Polka

$\text{♩} = 100$

8

1. 2.

16

24

1. 2.

91. The Last Dance

Allegretto

Musical score for "The Last Dance" in 6/8 time, key of B-flat major. The score consists of four staves of music. The first staff begins with a dynamic marking of *f*. The second staff includes a first ending bracket and a dynamic marking of *mp* *cresc.*. The third staff includes dynamic markings of *dim.*, *mp* *cresc.*, and *1 X dim.*. The fourth staff concludes with a double bar line.

92. The Fortune Teller

Musical score for "The Fortune Teller" in 2/4 time, key of D major. The score consists of three staves of music. The first staff begins with a dynamic marking of *f* and ends with a fermata. The second staff includes dynamic markings of *ff* and *f*. The third staff ends with a fermata.

93. Black and White Rag

Allegro

Musical score for "Black and White Rag" in 4/4 time, key of D major. The score consists of four staves of music. The first staff includes a first ending bracket. The second staff includes a triplet marking of 3. The third and fourth staves continue the rhythmic pattern.

16 **1.** **2.**

22

26

31 **1.** **2.**

36 3

40 3

44

49 **1.** **2.**

94. Blue Bird

f

6 *mp*

11

95. The Irish Music Club**Allegro**

Musical score for "The Irish Music Club" in G major, 2/4 time. The piece is marked **Allegro** and begins with a dynamic of **f**. The score consists of five staves of music. The first staff starts with a treble clef, a key signature of one sharp (F#), and a 2/4 time signature. The melody is written in a single line. The second staff begins at measure 5. The third staff begins at measure 9 and includes the dynamic marking **mp cresc.** at the end. The fourth staff begins at measure 14 and ends with a double bar line and repeat dots. The music features a mix of eighth and sixteenth notes, with some triplet patterns.

96. Champion's March

Musical score for "Champion's March" in B-flat major, 2/4 time. The piece is marked **f** and begins with a treble clef, a key signature of two flats (Bb), and a 2/4 time signature. The score consists of seven staves of music. The first staff starts with a treble clef, a key signature of two flats (Bb), and a 2/4 time signature. The melody is written in a single line. The second staff begins at measure 8 and includes several triplet markings (3). The third staff begins at measure 16 and includes a triplet marking (3). The fourth staff begins at measure 24 and includes a triplet marking (3). The fifth staff begins at measure 32 and includes the dynamic marking **mp**. The sixth staff begins at measure 40. The music features a mix of eighth and sixteenth notes, with many triplet patterns.

48

f 3 3

Musical staff 48-53 in G minor, featuring a forte (*f*) dynamic and two triplet markings.

54

3 3

Musical staff 54-59 in G minor, featuring two triplet markings.

60

3 3 3

Musical staff 60-65 in G minor, featuring three triplet markings.

97. The Night Watch

mp

Musical staff 97-102 in D major, starting with a mezzo-piano (*mp*) dynamic.

6

1. 2. *mf*

Musical staff 97-102, first ending section with first and second endings and a mezzo-forte (*mf*) dynamic.

12

Musical staff 97-102, second ending section.

18

mp

Musical staff 97-102, third ending section with mezzo-piano (*mp*) dynamic.

24

1. 2.

Musical staff 97-102, fourth ending section with first and second endings.

98. The Adieu

♩ = 120

f p

Musical staff 98-103 in G minor, 2/4 time, featuring a fortissimo-piano (*f p*) dynamic.

7

mp

Musical staff 98-103, first ending section with mezzo-piano (*mp*) dynamic.

14

22

30

99. Better Late than Never

Allegro

7

14

100. The Gallop Dance

7

Fine

15

22

D.C. al Fine

101. Brechin Castle

Musical score for Brechin Castle, measures 1-13. The piece is in 2/4 time with a key signature of one flat (Bb). The first measure starts with a dynamic marking of *f-p*. Trills (*tr*) are indicated above measures 1, 2, 3, 11, 12, and 13. Accents (*>*) are placed above notes in measures 4, 5, 6, 7, 8, 9, 10, 11, 12, and 13. The notation includes eighth and sixteenth notes, often beamed together, and rests.

102. Acacia

Musical score for Acacia, measures 1-13. The piece is in 2/4 time with a key signature of one flat (Bb). The first measure starts with a dynamic marking of *f-p*. Triplet markings (*3*) are placed above the first and eighth measures. The notation includes eighth and sixteenth notes, often beamed together, and rests. A *p³ f* dynamic marking appears at the end of measure 5. The score concludes with a double bar line and repeat dots in measure 13.

103. Gladiator

Musical score for '103. Gladiator' in G major, 2/4 time. The score consists of five staves of music. The first staff begins with a treble clef, a key signature of one sharp (F#), and a 2/4 time signature. It starts with a forte (*ff*) dynamic and a repeat sign. The second staff continues the melody, ending with a first ending bracket and a forte (*f*) dynamic. The third staff continues the melody. The fourth staff features a first ending bracket and a second ending bracket, with a *D.S. al Fine* instruction above the second ending. The fifth staff concludes the piece.

104. The Weaver's Rant

Vivace

Musical score for '104. The Weaver's Rant' in B-flat major, 2/4 time. The score consists of three staves of music. The first staff begins with a treble clef, a key signature of two flats (B-flat and E-flat), and a 2/4 time signature. It starts with a forte (*f*) dynamic. The second staff continues the melody, ending with a first ending bracket and a piano (*p*) dynamic. The third staff concludes the piece.